

BARANA SIMMENTALS

“Breeding Cattle for the Commercially Minded since 1980”

21ST ANNUAL ON PROPERTY BULL SALE
Friday July 9, 2021 | 1pm



LOT 8 PTCP Q024 [L] & LOT 10 PTCP Q050 [R]

34 BULLS

Predominantly Polled
27 Simmental
6 Registered Black Angus
1 Registered Shorthorn



www.baranasimmentals.com

 **AuctionsPlus**
Buy and Sell stock nationally





WELCOME

Welcome to Barana Simmentals 21st Annual On-Farm Bull Sale

Stud principal, Peter Cook has worked hard for over 41 years breeding Simmentals that reinforce Barana's long held reputation with both commercial & stud cattle producers. We have sold bulls nationwide and secured a solid client base over many decades. We are a 'hands on' family business. We live & work on our farm so we understand the hardships & challenges our clients face because we are exposed to those same challenges. We extend our sincere thanks to our valued clients for their continued & solid support.

This year's Barana sale will be conducted on farm and livestreamed via AuctionsPlus.

We aim to offer 34 bulls at our 2021 sale, predominantly polled. Of this year's Barana sale draft, the majority are soft, early maturing, middle-of-the-road type bulls. This style of bull will introduce cattle into your herd that will eat less, have the ability to finish with a higher yield & put more dollars in your pocket. Use purebred Simmental bulls to gain the advantages of hybrid vigour for added performance, weight gain, carcase, fertility, softness & longevity. The females to be offered exhibit the superior maternal traits for which traditional Simmentals are renowned. It is rewarding to see Barana pedigrees in successful stud programmes and Barana genetics breeding on for our clients.

Sale bulls have been supplementary fed from May 2021 on a ration of wheaten hay & light grain mix for 85 days.

Bulls will present in good, strong condition on sale day. Barana bulls are not overdone on feed as we value longevity in the bulls we breed & no foot trimming has been performed on any of the cattle presented.

As in past sales, objective data will be available for each bull & all inspections & guarantees will be provided. All bulls must pass stringent veterinary tests for breeding & soundness. These bulls will be semen tested, including morphology, Breedplan recorded and scanned for EMA, FAT & IMF. Barana maintains a Level 7 J-BAS [Johnes Beef Assurance Score] status.

Each bull in this catalogue has been tested to

show that they are not a BVDV Persistently Infected (PI) animal. All sale bulls have been vaccinated against BVDV with Pestigard®, against Leptospirosis with Ultravac® 7in1 and Vibriosis with Vibrovax®. All sale bulls have been given 2 vaccinations of each product to ensure they have full immunity which is valid for 12 months. This is your assurance that we have taken all available steps to protect our animals against introducing disease into your herd and to ensure their continued performance. We recommend that you continue with annual vaccination to help protect the health of your herd and maximise the productivity of your business. All sale bulls have also been vaccinated against 3-day sickness & tick fever [3-germ blood] to suit our Queensland clients.

Free cartage will be offered to bull buyers within a 300 km radius of Barana and for interstate bull buyers, free cartage along the major route from Coolah to Goondiwindi & from Coolah to Wodonga. Queensland bull buyers will also be offered free cartage to Roma. Conditions apply. Please contact Peter Cook to enquire.

The sale is interfaced with AuctionsPlus & will be conducted live online in real time.

The catalogue will be available for preview on our website www.baranasimmentals.com. You can also follow us on Facebook, Twitter & Instagram.

Barana Simmentals offer quality, guarantees, reputation, performance & results. We look forward to seeing you on sale day or to arrange inspection prior to the sale please contact Peter Cook or the selling agents.

STUD HISTORY

Barana Simmentals was founded by Stud Principal, Peter Cook in 1980 on traditional European and New Zealand bloodlines. Peter has worked hard for over 40 years through good & bad seasons to secure Barana's long held reputation with both commercial & stud cattle producers around Australia.

Peter began showing at major Royal Shows in 1986, securing many Champion awards and earning a name for breeding good, sound, functional cattle. He ceased showing cattle in 2001 after 15 years exhibiting & achieving success at all major shows.

Barana has a stud herd including 150 registered & commercial breeders. Great importance is placed on breeding for ease of calving, milk production & fertility and females must be able to rear a calf under natural conditions. Barana has endeavoured to breed bulls that produce steers that are quick growing with good carcass characteristics and the ability to finish. We have enjoyed success in the Australian National Field Days Grass-fed Steer and the RAS NSW Feedlot JapOx Competitions & the Scone Beef Bonanza where we secured the Champion Purebred Carcass with a total point score of 90.867.

Barana bulls get results with clients reporting Simmental Cross Vealers straight off their mothers consistently dressing out at 58% & outdoing other breeds in weight for age. Barana clients have succeeded in gaining a rare Championship/Reserve double in the heavyweight division steer carcass judging at Brisbane Royal with a Simmental Cross Steer sire by a Barana bull. Our clients have topped the annual Bindaree Beef Weaner Sale with a pen of Simmental Cross Steers & won best pen of Euro or Euro Cross Steers in the competition section. Barana clients have topped the Casino Weaner & Grower Sale with 10-11 month old Simmental Cross Weaner Steers consecutively and secured top pen of Euro bred steers at the sale. Our bull buyers report that the introduction of Simmental bulls in their herd has significantly lifted weights in the weaner steers they turn off.

Peter purchased Karewa Jester, a polled son of German sire Eizenherz from New Zealand in 2000. This bull bred well in Barana's polling programme. German genetics were utilised with Zimbo and Gowrie Yankee [P] producing excellent progeny. We introduced South African bred bulls into our Barana herd with Bullock Hills Buster [P] and Corinda Downs Buckshot [AI] [ET] [P] in 2007.

Callendale Jasper [P] and Woonallee Jumbo have produced low birthweight, easy calving, early maturing offspring. We purchased the homozygous polled Woonallee Looking Glass in 2017.

In February 2020 Barana purchased a new outcross stud sire Willandra Panama [P] from the Cowcher family's Willandra Simmental stud in WA followed up with the purchase of Willandra Qantastic [P] in 2021.

Barana Lindel [PP] our homozygous polled bull is breeding some outstanding progeny.

Barana genetics have been ongoing proven performers for us & our clients over many decades earning champion awards in both the show ring & carcass competitions. The benefits of reliable Barana breeding are evident.

The Barana sale is the premier sale in NSW for consistent quality & value for money. We hope to continue with the pleasing results achieved in the past at our 21st Annual On-Farm Sale.

SALE INFORMATION

Location

Barana is located 14km north of Coolah, NSW, on the Black Stump Way. Refer to map on inside back cover.

Inspection

Bulls can be inspected from 9am on the day of the sale or pre-sale by appointment. Inspections can be arranged through Peter Cook on 0427 775 233 or the selling agents.

Rebate

Selling agents are Elders and Davidson Cameron & Co with 2% rebate to outside agents introducing their clients at least 24 hours prior to the sale and settling within 7 days. The agent must attend the sale with the client or on the client's behalf. The rebate will not be paid outside these conditions.

Phone Bidding

Please contact the selling agents 24 hours prior to the sale to arrange phone bidding. Barana has very good Telstra mobile phone reception.

No Verbal Instructions

Please complete a buyer's instruction sheet available on sale day from the agents ensuring your phone number is provided. To assist us with delivery of your bull please draw up a map of your property or delivery point indicating nearest roads, towns or prominent landmarks and include your contact phone number.

AuctionsPlus

The sale is interfaced with AuctionsPlus & will be conducted live online in real time. For those not able to attend the sale, new users must register 24 hours prior to the sale to bid.

GST

All lots are sold GST exclusive i.e. if the bull is knocked down for \$5,000 you will be charged \$5,500.

Insurance

There is no vendor insurance on sale bulls. It is the responsibility of the buyers to insure their purchases.

Luncheon

Complimentary lunch will be supplied.

Accommodation

If required, you are advised to make your own enquiries regarding availability of accommodation in Coolah.

SALE INFORMATION

Transport

NEW SOUTH WALES BULL BUYERS will be offered free cartage within a 300 km radius of Barana. INTERSTATE BULL BUYERS will be offered free cartage along the major route from Coolah to Goondiwindi and from Coolah to Wodonga.

QUEENSLAND BULL BUYERS will also be offered free cartage to Roma. Conditions Apply. Please contact Peter Cook to enquire.

Please note that free cartage does not apply to any female lots offered for sale.

All care will be taken but no responsibility will be accepted for lots waiting for delivery or during delivery. Formal possession, risk & expense passes to the buyer at the fall of the hammer.

Selling Agents

ELDERS

Gunnedah Nik Hannaford 0417 201 460
Tamworth Brian Kennedy 0427 844 047
Dubbo Paul Jameson 0428 667 998
Inverell Lincoln McKinlay 0419 239 963

DAVIDSON CAMERON & CO

Luke Scicluna 0428 421 82
Paul Banks 0427 922 700
Tom Tanner 0448 462 177

AUCTIONEER

Paul Dooley 0458 662 646

CONDITIONS FOR SALE BY AUCTION IN NEW SOUTH WALES WILL APPLY

Disclaimer

Barana Pastoral, the selling agents, officers, agents & employees, while exercising due care, provide all information without responsibility and do not warrant its accuracy. They also accept no responsibility or liability for accidents that occur on or about the venue. Any person attending the Barana Simmental Sale Venue does so at their own risk.



AuctionsPlus

How to Register and Bid on AuctionsPlus

1

Go to **www.auctionsplus.com.au** to register at least 48 hours before the sale.

2

Select **"Sign Up"** in the top right hand corner.

3

Fill out your name, mobile number, email address and create a password.

4

Go to your emails and confirm the account.

5

Return to AuctionsPlus and log in.

6

Select **"Dashboard"** and then select **"Request Approval to Buy"**.

7

Fill in buyer details and once completed go back to Dashboard.

8

Complete buyer induction module (approx. 30 minutes).

9

AuctionsPlus will email you to let you know that your account has been approved.

10

Log in on sale day and connect to auction.

11

Bid using the two-step process – unlock the bid button and bid at that price.

12

If you are successful, the selling agent will contact you post sale to organise delivery and payment.

For more information please contact us on:

Phone: (02) 9262 4222

Email: info@auctionsplus.com.au

VETERINARY NOTES

General Health

All cattle are TB & Brucellosis free. All bulls in this catalogue have been tested to show they are not a BVDV Persistently Infected [PI] animal. All sale bulls have been vaccinated against BVDV with Pestigard, against Leptospirosis with Ultravac 7in1 and Vibriosis with Vibrovax. All sale bulls have been given two vaccinations of each product to ensure they have full immunity which is valid for 12 months. The sale bulls have also been vaccinated against 3-day sickness & tick fever [3 germ blood].

Barana maintains a Level 7 J-BAS [Johnes Beef Assurance Score] status.

The Barana Sale Bull Breeding Soundness Evaluation

The sale bulls have been subjected to a number of strict assessments by our Vet to ensure they will be physically and reproductively sound.

Structural Soundness Examination

All animals have been closely examined paying particular attention to the following: feet, legs, back, jaws, teeth & walking ability. They have been deemed to be within normal parameters.

Semen Examination

Just prior to the sale all bulls have been electro-ejaculated. At this time, the testes have been palpated and measured. The external genitalia are thoroughly examined, and a gross and microscopic assessment of the semen is made including morphology. This suite of tests is very comprehensive. We have carried out these assessments to ensure that the bull performs satisfactorily.

Carcase Information

Scan measurements and daily weight gain figures will be available on sale day.

CONDITIONS FOR SALE BY AUCTION IN NEW SOUTH WALES WILL APPLY

Bull Fertility Testing - Degrees of Confidence

Chris Hallett BVSc MVSt

Many aspects of Veterinary Science are cut and dry. Pregnancy testing for example is either pregnant or not pregnant. Unfortunately, Bull Fertility Testing is not as cut and dry.

We like to tell our clients that Bull Fertility Testing is all about Degrees of Confidence. The greater the range of bull fertility tests that we look at, the greater the degree of confidence we have that your bull is fertile.

If we look at the bull in a paddock and see he is not lame and has testicles we could say we have 50% confidence he is going to do the job.

We start to improve our confidence level by doing some fertility examinations. We firstly feel and measure his testicles, eliminating undersize or abnormal testicles.

We perform an examination of the internal sex organs removing congenital abnormalities or acquired conditions such as seminal vesiculitis.

Electro-ejaculation examination is utilised for visualisation of the penis and semen. Penile examination is to identify normal appearance and exteriorisation of the penis. Penile abnormalities include such conditions as trauma, warts, adhesions, infections or retained frenulums.

Semen examination under the microscope is utilised to check motility, crush-side morphology and ensuring it is free of infection.

Crush side semen analysis is a screening test for semen morphology analysis. At this stage one can make an educated assessment that the bull is fertile or for greater confidence we can submit a sample to a Semen Morphology Laboratory. A Sperm Morphology Laboratory assesses the semen under higher magnification identifying possible intra sperm-head problems that may not be as identified in a crush-side morphology assessment.

Semen morphological abnormalities may have genotypic (genetic) and phenotypic (environmental) influences hence repeated

morphological tests are required to truly assess the true fertility assessment of a bull if morphological abnormalities are present. The timing between morphological assessments is ideally 70-days apart.

Semen assessment and visualisation of the penis are not necessarily an indication of the serving ability of a bull ie the ability of the bull to gain intromission to the cow. So, a satisfactory serving ability test would further increase our confidence and this test needs to be repeatable and the frequency may give us an additional indication of the bull's libido. Often this test is done by the buyer at the start of joining (if just an observation).

A fertility test is potentially only good for the day that it is performed. Semen production works on a 70-day cycle if anything upsets the bull it may take a full semen cycle for normal semen to be produced again. In this time the bull may go through a transient period of sub or infertility.

Events that upset the semen cycle and production can include disease, stress, transport, environment and nutritional changes. So, if you purchase a bull and move the bull to a completely different environment, we strongly recommend you do your own fertility examination prior to use.

During the joining period we strongly recommend regular bull inspections to ensure bull is in good health, suffering no lameness, penile or fighting injury and that he is still achieving intromission.

BARANA'S TOP PRICE BULL 2020



BARANA PIERSON (P)

Barana Pierson [P] PTCP P074 sold online to the Finger Family, Dysart, Queensland for \$16,000.

SIRE: Woonallee Jumbo [P]

DAM: Barana Ellison

FIND US ON INSTAGRAM & FACEBOOK
[@baranasimentals](#)



2021 REFERENCE SIRES



Sire CHAMPS ROMANO
CHAMPS BRAVO (P)
VIRGINIA POLL BARBI SUE

Dam WOONALLEE BHR TORNADO (P) (ET) (AI)
WOONALLEE KATHIE G73 (P)
WOONALLEE KATHIE B111 (ET) (AI)

May 2021 Simmental Trans Tasman Group Breedplan

	Calving Ease DIR [%]	Calving Ease DTRS [%]	Birth Wt. [kg]	200 Day Wt [kg]	400 Day Wt [kg]	600 Day Wt [kg]	Milk [kg]	Scrotal Size [cm]	Carcase Wt [kg]	Eye Muscle Area [sg cm]	Rib Fat [mm]	Rump Fat [mm]	Retail Beef Yield [%]	IMF [%]
EBV	1.8	-5.8	0.8	26	38	43	14	0.1	30	6.1	-0.9	-0.7	3.8	-0.9
Acc	56%	54%	76%	74%	78%	80%	56%	80%	68%	62%	63%	62%	62%	55%



Sire TOPWEIGHT DIRECTOR
WILLANDRA GOMEZ (P)
WILLANDRA DIANA Z26 (P)

Dam WOONALLEE BHR TORNADO (P) (ET) (AI)
WOONALLEE VASTI G52 (P)
WOONALLEE VASTI C87 (ET) (AI)

May 2021 Simmental Trans Tasman Group Breedplan

	Calving Ease DIR [%]	Calving Ease DTRS [%]	Birth Wt. [kg]	200 Day Wt [kg]	400 Day Wt [kg]	600 Day Wt [kg]	Milk [kg]	Scrotal Size [cm]	Carcase Wt [kg]	Eye Muscle Area [sg cm]	Rib Fat [mm]	Rump Fat [mm]	Retail Beef Yield [%]	IMF [%]
EBV	-2.4	-2.2	2.7	20	37	57	17	1	23	0.5	-0.2	0.3	0.6	0
Acc	51%	51%	71%	64%	63%	63%	55%	55%	53%	45%	51%	50%	48%	43%



DOB 24/06/2019

Tattoo PTCP Q011

Grade Pure


Colour Red

Scrotal 42

Eye Pigment 100/100

Age 24

Extremely long bodied bull with tremendous thickness & structure. This bull has the makings of a true sire and worthy of your attention.

May 2021 Simmental Trans Tasman Group Breedplan														
	Calving Ease DIR [%]	Calving Ease DTRS [%]	Birth Wt. [kg]	200 Day Wt [kg]	400 Day Wt [kg]	600 Day Wt [kg]	Milk [kg]	Scrotal Size [cm]	Carcase Wt [kg]	Eye Muscle Area [sg cm]	Rib Fat [mm]	Rump Fat [mm]	Retail Beef Yield [%]	IMF [%]
EBV	-4.1	-5.2	2.7	25	39	46	9	0.5	27	4.8	-0.9	-0.9	2.8	-0.6
Acc	34%	34%	55%	54%	58%	64%	38%	65%	50%	44%	42%	42%	43%	34%

Sire

CHAMPS ROMANO
CHAMPS ROMANO
VIRGINIA POLL BARBI SUE
WOONALLEE JUMBO
WOONALLEE BHR TORNADO
WOONALLEE KATHIE G73
WOONALLEE KATHIE

Dam

CORINDADOWNS BUCKSHOT
BARANA ECHUCA
BARANA ZELDA 2
BARANA GERALDENE
BARANA UNION JACK
BENARBA XDANCER
WONDENIA SNOW DROP

Purchaser \$



DOB 26/09/2019

Tattoo PTCP Q025

Grade Pure

Colour Red

Scrotal 37

Eye Pigment 100/0

Age 21

Excellent length of body with a soft, slick coat. Deep barrelled, medium maturing muscle pattern. Stands on good bone.

May 2021 Simmental Trans Tasman Group Breedplan

	Calving Ease DIR [%]	Calving Ease DTRS [%]	Birth Wt. [kg]	200 Day Wt [kg]	400 Day Wt [kg]	600 Day Wt [kg]	Milk [kg]	Scrotal Size [cm]	Carcase Wt [kg]	Eye Muscle Area [sg cm]	Rib Fat [mm]	Rump Fat [mm]	Retail Beef Yield [%]	IMF [%]
EBV	-0.7	-3.9	3.3	33	53	78	12	0	41	4	-1	-1.1	2.6	-0.4
Acc	36%	36%	56%	56%	59%	65%	41%	66%	52%	46%	45%	44%	46%	37%

CHAMPS ROMANO

CHAMPS ROMANO

VIRGINIA POLL BARBI SUE

Sire WOONALLEE JUMBO

WOONALLEE BHR TORNADO

WOONALLEE KATHIE G73

WOONALLEE KATHIE B111

Dam

SHAWACRES NACOBI

BULLOCKHILLS BUSTER

BULLOCKHILLS ERP P U4

BARANA FERNANDA

VINTAGE MAVERICK

BARANA YELENA

BARANA ROBERTA



DOB 28/12/2019

Tattoo PTCP Q056

Grade Pure

Colour Red

Scrotal 43

Eye Pigment 100/100

Age 18

Bull displaying sirey outlook. Very thick, soft, deep flanked bull with great soft muscle development.

CHAMPS ROMANO

CHAMPS ROMANO

VIRGINIA POLL BARBI SUE

Sire WOONALLEE JUMBO

WOONALLEE BHR TORNADO

WOONALLEE KATHIE G73

WOONALLEE KATHIE B111

Dam

BARANA NAPOLI [H] PTCPN038


Purchaser

\$



DOB 8/09/2019
Tattoo PTCP Q018
Grade Pure
Colour Red
Scrotal 38
Eye Pigment 100/100
Age 22

Stud sire potential here. Moderate, soft, thick bull typical of Woonallee Jumbo progeny. One of my pick bulls.

May 2021 Simmental Trans Tasman Group Breedplan														
	Calving Ease DIR [%]	Calving Ease DTRS [%]	Birth Wt. [kg]	200 Day Wt [kg]	400 Day Wt [kg]	600 Day Wt [kg]	Milk [kg]	Scrotal Size [cm]	Carcase Wt [kg]	Eye Muscle Area [sg cm]	Rib Fat [mm]	Rump Fat [mm]	Retail Beef Yield [%]	IMF [%]
EBV	-0.6	-2.8	1.8	22	37	46	13	0.5	26	4.4	-0.5	-0.2	2.5	-0.3
Acc	34%	34%	52%	53%	58%	64%	36%	66%	51%	45%	44%	43%	45%	36%

	CHAMPS ROMANO		WATERFRONT DURHAM-D49
	CHAMPS ROMANO		WATERFRONT FABIAN-F72
	VIRGINIA POLL BARBI SUE		LANGTON-GATE PA039
Sire	WOONALLEE JUMBO	Dam	BARANA JEWEL
	WOONALLEE BHR TORNADO		BANDEEKA POLL COSSACK
	WOONALLEE KATHIE G73		BARANA FRED A
	WOONALLEE KATHIE		BARANA XASPERATE



DOB 20/06/2019

Tattoo PTCP Q007

Grade Pure


Colour Red

Scrotal 41

Eye Pigment 100/100

Age 24

Very stylish & well put together bull. Strong topline. Good angle to his legs as Woonallee Jumbo always throws to his offspring.

May 2021 Simmental Trans Tasman Group Breedplan														
	Calving Ease DIR [%]	Calving Ease DTRS [%]	Birth Wt. [kg]	200 Day Wt [kg]	400 Day Wt [kg]	600 Day Wt [kg]	Milk [kg]	Scrotal Size [cm]	Carcase Wt [kg]	Eye Muscle Area [sg cm]	Rib Fat [mm]	Rump Fat [mm]	Retail Beef Yield [%]	IMF [%]
EBV	-2.1	-4.4	2.5	26	44	52	12	0.4	30	4.1	-1.1	-1.2	2.6	-0.4
Acc	34%	33%	53%	54%	60%	65%	38%	66%	52%	45%	43%	43%	44%	35%

Sire
 CHAMPS ROMANO
 CHAMPS ROMANO
 VIRGINIA POLL BARBI SUE
 WOONALLEE JUMBO
 WOONALLEE BHR TORNADO
 WOONALLEE KATHIE G73
 WOONALLEE KATHIE

Dam
 CORINDADOWNS BUCKSHOT
 BARANA ECHUCA
 BARANA ZELDA 2
 BARANA HILLY
 GOWRIE YANKEE
 BARANA DUGONG
 BARANA BROOK



DOB 10/09/2019

Tattoo PTCP Q015

Grade Pure

Colour Dark Red

Scrotal 36

Eye Pigment 100/100

Age 21

Very heavy muscled bull full of red meat. Good carcase characteristics.

Sire

CHAMPS ROMANO
CHAMPS ROMANO
VIRGINIA POLL BARBI SUE
WOONALLEE JUMBO
WOONALLEE BHR TORNADO
WOONALLEE KATHIE G73
WOONALLEE KATHIE B111

Dam

PUREBRED UNREGISTERED COW

Purchaser

\$



DOB 23/06/2019

Tattoo PTCP Q010

Grade Pure

Colour Red


Scrotal 42.5

Eye Pigment 100/100

Age 24

A stylish young bull with great structure and carcase shape. Heavy muscled.

May 2021 Simmental Trans Tasman Group Breedplan

	Calving Ease DIR [%]	Calving Ease DTRS [%]	Birth Wt. [kg]	200 Day Wt [kg]	400 Day Wt [kg]	600 Day Wt [kg]	Milk [kg]	Scrotal Size [cm]	Carcase Wt [kg]	Eye Muscle Area [sg cm]	Rib Fat [mm]	Rump Fat [mm]	Retail Beef Yield [%]	IMF [%]
EBV	-0.9	-4.1	1.6	24	39	52	12	0.4	29	3.7	0.3	0.7	1.5	-0.1
Acc	36%	35%	53%	55%	59%	64%	40%	65%	52%	46%	44%	44%	45%	37%

Sire CHAMPS ROMANO
CHAMPS ROMANO
VIRGINIA POLL BARBI SUE
WOONALLEE JUMBO
WOONALLEE BHR TORNADO
WOONALLEE KATHIE G73
WOONALLEE KATHIE

Dam SHAWACRES NACOBI
BULLOCKHILLS BUSTER
BULLOCKHILLS ERP P U4
BARANA FOREVER
GOWRIE YANKEE
BARANA COMPASSION
WEST COAST VANITY



DOB 24/07/2019

Tattoo PTCP Q024

Grade Pure


Colour Red

Scrotal 38

Eye Pigment 100/100

Age 23

This dark red, thickly made, easy doing young sire covers all the bases.

May 2021 Simmental Trans Tasman Group Breedplan														
	Calving Ease DIR [%]	Calving Ease DTRS [%]	Birth Wt. [kg]	200 Day Wt [kg]	400 Day Wt [kg]	600 Day Wt [kg]	Milk [kg]	Scrotal Size [cm]	Carcase Wt [kg]	Eye Muscle Area [sg cm]	Rib Fat [mm]	Rump Fat [mm]	Retail Beef Yield [%]	IMF [%]
EBV	0	-1.3	1.3	23	31	40	11	0.3	23	4	-0.3	-0.1	2.1	-0.3
Acc	36%	35%	51%	48%	50%	49%	40%	47%	43%	37%	38%	37%	37%	33%

Sire

CHAMPS ROMANO
CHAMPS ROMANO
VIRGINIA POLL BARBI SUE
WOONALLEE JUMBO
WOONALLEE BHR TORNADO
WOONALLEE KATHIE G73
WOONALLEE KATHIE

Dam

SHAWACRES NACOBI
BULLOCKHILLS BUSTER
BULLOCKHILLS ERP P U4
BARANA GEM
BARANA ZULU
BARANA DAVIS
BARANA XTENT



DOB 12/09/2019

Tattoo MKHP Q001

Grade Pure

Colour Light Red

Scrotal 41

Eye Pigment 100/100

Age 21

Soft, early maturing, easy doing bull. Will produce those good vealers.

	CHAMPS ROMANO		SHAWACRES NACOBI
	CHAMPS ROMANO		BULLOCKHILLS BUSTER
	VIRGINIA POLL BARBI SUE		BULLOCKHILLS ERP P U4
Sire	WOONALLEE JUMBO	Dam	MORNING GAIL
	WOONALLEE BHR TORNADO		BARANA YVES
	WOONALLEE KATHIE G73		MORNING ALEX
	WOONALLEE KATHIE		MORNING WENDY

Purchaser

\$

LOT 10

BARANA QUANTUM Q050 [P]
A/c: Barana Pastoral



DOB 16/11/2019

Tattoo PTCP Q050

Grade Pure


Colour Red

Scrotal 42

Eye Pigment 100/100

Age 19

A bull with length & muscle development displaying great carcase characteristics.

May 2021 Simmental Trans Tasman Group Breedplan														
	Calving Ease DIR [%]	Calving Ease DTRS [%]	Birth Wt. [kg]	200 Day Wt [kg]	400 Day Wt [kg]	600 Day Wt [kg]	Milk [kg]	Scrotal Size [cm]	Carcase Wt [kg]	Eye Muscle Area [sg cm]	Rib Fat [mm]	Rump Fat [mm]	Retail Beef Yield [%]	IMF [%]
EBV	-2	-0.8	2.5	21	34	52	12	1.4	23	2.6	-0.8	-0.8	1.6	-0.1
Acc	34%	33%	54%	51%	54%	59%	38%	57%	46%	39%	38%	37%	38%	31%

Sire

TOPWEIGHT DIRECTOR
WILLANDRA GOMEZ (P)
WILLANDRA DIANA Z26
WOONALLEE LOOKING GLASS
WOONALLEE BHR TORNADO
WOONALLEE VASTI G52
WOONALLEE VASTI C87

Dam

DOUBLE BAR D MAKE M POLLED
DOUBLE BAR D MADDOX 40S
DOUBLE BAR D ELSIE 7N
BARANA EDNA
WONDENIA TAURUS
BARANA VANILLA
BARANA QUEANBEYAN

Purchaser \$



DOB 3/03/2020

Tattoo PTCP R008

Grade Pure

Colour Tan

Scrotal 41.5

Eye Pigment 100/100

Age 16

A younger bull brought forward in the sale because of his overall balance, length & depth and softness. Has that strong sirey head. A bull not to be missed.

	TOPWEIGHT DIRECTOR	
	WILLANDRA GOMEZ (P)	
	WILLANDRA DIANA Z26	
Sire	WOONALLEE LOOKING GLASS	Dam
	WOONALLEE BHR TORNADO	PUREBRED SIMMENTAL PTCPL082
	WOONALLEE VASTI G52	
	WOONALLEE VASTI C87	

Purchaser \$

LOT 12

BARANA QUARTERBACK Q041 [P]

A/c: Barana Pastoral



DOB 9/10/2019

Tattoo PTCP Q041

Grade Pure

Colour Tan


Scrotal 36

Eye Pigment 75/75

Age 21

Deep, thick, soft, early maturing type with soft, fine skin. Will produce those quick finishing steers.

May 2021 Simmental Trans Tasman Group Breedplan

	Calving Ease DIR [%]	Calving Ease DTRS [%]	Birth Wt. [kg]	200 Day Wt [kg]	400 Day Wt [kg]	600 Day Wt [kg]	Milk [kg]	Scrotal Size [cm]	Carcase Wt [kg]	Eye Muscle Area [sq cm]	Rib Fat [mm]	Rump Fat [mm]	Retail Beef Yield [%]	IMF [%]
EBV	0.4	-0.7	0.6	15	15	13	10	-0.1	8	3.5	-0.1	0.2	1.7	-0.3
Acc	35%	34%	55%	54%	59%	65%	40%	67%	51%	45%	43%	43%	44%	35%

CHAMPS ROMANO

CHAMPS ROMANO

VIRGINIA POLL BARBI SUE

Sire WOONALLEE JUMBO

WOONALLEE BHR TORNADO

WOONALLEE KATHIE G73

WOONALLEE KATHIE

Dam

VINTAGE MAVERICK

BARANA YARDLEY

BARANA SHEBA

BARANA ADELINE

BARANA UNION JACK

BENARBA XLOVE

WONDENIA OLYMPIC HOPE


Purchaser

\$



DOB 9/10/2019
Tattoo PTCP Q042
Grade Pure
Colour Red
Scrotal 37.5
Eye Pigment 100/100
Age 21

Good length of body. Smooth muscle development. Finer boned. Bull should be an easy calver.

May 2021 Simmental Trans Tasman Group Breedplan														
	Calving Ease DIR [%]	Calving Ease DTRS [%]	Birth Wt. [kg]	200 Day Wt [kg]	400 Day Wt [kg]	600 Day Wt [kg]	Milk [kg]	Scrotal Size [cm]	Carcase Wt [kg]	Eye Muscle Area [sg cm]	Rib Fat [mm]	Rump Fat [mm]	Retail Beef Yield [%]	IMF [%]
EBV	0.1	-2.2	0.3	15	13	9	10	0.5	6	3.7	-0.6	-0.3	2	-0.3
Acc	33%	32%	53%	54%	59%	65%	36%	67%	52%	46%	43%	43%	45%	35%

Sire

CHAMPS ROMANO
CHAMPS ROMANO
VIRGINIA POLL BARBI SUE
WOONALLEE JUMBO
WOONALLEE BHR TORNADO
WOONALLEE KATHIE G73
WOONALLEE KATHIE B111

Dam

CORINDADOWNS BUCKSHOT
BARANA EMOTION
BARANA XIT
BARANA KATIE
BARANA YARDLEY
BARANA ADELINE
BENARBA XLOVE



DOB 10/09/2019

Tattoo PTCP Q023

Grade Pure

Colour Red

Scrotal 37.5

Eye Pigment 100/100

Age 21

Soft, smooth muscle pattern. Stands on medium frame. Easy calver.

Sire

CHAMPS ROMANO
CHAMPS ROMANO
VIRGINIA POLL BARBI SUE
WOONALLEE JUMBO
WOONALLEE BHR TORNADO
WOONALLEE KATHIE G73
WOONALLEE KATHIE B111

Dam

PUREBRED UNREGISTERED SIMMENTAL

Purchaser

\$



DOB 2/12/2019

Tattoo PTCP R102

Grade Pure

Colour Light Red

Scrotal 39

Eye Pigment 100/100

Age 19

Well put together bull. Very sound on feet & legs. Soft, fine skin. Middle of the road muscle type.

Sire EANDO EZRA [P] BXDPJ009

Dam EANDO HESTER

Purchaser \$



DOB 29/02/2020

Tattoo PTCP R005

Grade Pure

Colour Red

Scrotal 36

Eye Pigment 100/100

Age 16

Thick, early maturing bull. Soft, fine skin. Suit vealer production.

	TOPWEIGHT DIRECTOR	
	WILLANDRA GOMEZ (P)	
	WILLANDRA DIANA Z26	
Sire	WOONALLEE LOOKING GLASS	Dam PUREBRED SIMMENTAL COW
	WOONALLEE BHR TORNADO	
	WOONALLEE VASTI G52	
	WOONALLEE VASTI C87	

Purchaser \$



DOB 2/06/2019

Tattoo JXE Q003

Grade Pure

Colour Black

Scrotal 39

Eye Pigment

Age 25

A very good Angus bull displaying heavy carcass characteristics. Depth, length & deep barrelled with soft, fine skin on good bone. My pick of our Angus draft.

TACE TransTasman Angus Cattle Evaluation	June 2021 TransTasman Angus Cattle Evaluation								
	CEDir	CEDtrs	GL	BW	200	400	600	MCW	Milk
EBVs	+2.0	+1.3	-5.8	+5.0	+45	+84	+111	+99	+17
Acc	41%	36%	52%	60%	58%	58%	59%	57%	53%
Perc	54	64	29	69	69	61	57	48	53
SS	DC	CWT	EMA	Rib	Rump	RBV	IMF	NFI-F	Doc
+2.3	-5.3	+62	+4.3	-0.4	-0.4	+0.7	+1.4	-0.03	-
53%	36%	54%	52%	57%	54%	55%	52%	44%	-
32	38	62	76	58	48	41	71	25	-

TE MANIA EMPEROR E343 pv
 ASCOT HALLMARK H147 pv
 MILLAH MURRAH BRENDA F123 pv
 Sire DALHWINNIE M70sv Dam
 HINGAIA 469#
 MILLAH MURRAH BRENDA F6 pv
 MILLAH MURRAH BRENDA Y33#

ARDROSSAN DIRECTION X3#
 KANSAS CUSTER C58 sv
 KANSAS BEAUTY STONE Z143 pv
 KANSAS DIANA F146#
 S A NEUTRON 377#
 KANSAS DIANA A16#
 KANSAS DIANA W8#



DOB 15/09/2019

Tattoo JXE Q007

Grade Pure

Colour Black

Scrotal 44

Eye Pigment

Age 21

Thick made bull showing strong topline with excellent length. Stands square behind.

TACE TransTasman Angus Cattle Evaluation	June 2021 TransTasman Angus Cattle Evaluation								
	CEDir	CEDtrs	GL	BW	200	400	600	MCW	Milk
EBVs	+2.9	+2.4	-2.9	+5.7	+49	+93	+125	+103	+19
Acc	37%	32%	53%	56%	57%	58%	64%	57%	49%
Perc	47	54	76	82	50	30	25	41	28
SS	DC	CWT	EMA	Rib	Rump	RBY	IMF	NFI-F	Doc
+3.7	-5.1	+70	+6.2	-1.1	-0.9	+1.3	+1.9	+0.11	-
64%	33%	54%	53%	56%	55%	55%	52%	46%	-
3	42	33	43	79	62	18	50	42	-

	TE MANIA EMPEROR E343 pv	KANSAS JUDD J82sv
	ASCOT HALLMARK H147 pv	KANSAS JUDD L76sv
	MILLAH MURRAH BRENDA F123 pv	KANSAS RITA G225#
Sire	DALHWINNIE M70sv	Dam
	HINGAIA 469#	BARANA BARBARA N3#
	MILLAH MURRAH BRENDA F6 pv	KANSAS SON OF THE SOIL D12sv
	MILLAH MURRAH BRENDA Y33#	KANSAS BARBARA F139#
		KANSAS BARBARA B231#



DOB 17/10/2019

Tattoo JXE Q011

Grade Pure

Colour Black

Scrotal 39

Eye Pigment

Age 20

A bull that always catches your eye. Stands square. Well put together bull displaying excellent outlook. Would suit heifers.

TACE TransTasman Angus Cattle Evaluation	June 2021 TransTasman Angus Cattle Evaluation								
	CEDir	CEDtrs	GL	BW	200	400	600	MCW	Milk
EBVs	+4.5	+3.5	-3.8	+4.8	+41	+78	+105	+89	+18
Acc	38%	33%	54%	56%	57%	58%	64%	57%	50%
Perc	35	44	62	64	86	80	73	67	38
SS	DC	CWT	EMA	Rib	Rump	RBV	IMF	NFI-F	Doc
+2.5	-5.6	+57	+4.6	-1.2	-0.5	+0.9	+2.2	+0.07	-
64%	34%	54%	53%	56%	55%	55%	52%	46%	-
25	33	80	71	81	51	32	39	37	-

TE MANIA EMPEROR E343 pv
 ASCOT HALLMARK H147 pv
 MILLAH MURRAH BRENDA F123 pv
 Sire DALHWINNIE M70sv Dam
 HINGAIA 469#
 MILLAH MURRAH BRENDA F6 pv
 MILLAH MURRAH BRENDA Y33#

KANSAS JUDD J82sv
 KANSAS JUDD L76sv
 KANSAS RITA G225#
 BARANA JEDDA N6#
 WK REPLAY#
 KANSAS JEDDA F195#
 KANSAS JEDDA U50sv


DOB 1/10/2019

Tattoo JXE Q010

Grade Pure

Colour Black

Scrotal 37

Eye Pigment
Age 21

A bull displaying good depth of hindquarter. Soft, fine skin. Good carcase characteristics.

TACE TransTasman Angus Cattle Evaluation	June 2021 TransTasman Angus Cattle Evaluation								
	CEDir	CEDtrs	GL	BW	200	400	600	MCW	Milk
EBVs	+3.0	+3.6	-3.5	+6.0	+49	+91	+129	+116	+17
Acc	39%	34%	54%	57%	58%	59%	64%	57%	51%
Perc	46	43	67	86	50	37	19	20	49
SS	DC	CWT	EMA	Rib	Rump	RBY	IMF	NFI-F	Doc
+1.5	-5.4	+62	+5.1	-0.2	-0.3	+0.4	+1.6	+0.07	-
65%	35%	53%	53%	55%	54%	54%	51%	45%	-
70	37	64	62	52	45	55	63	37	-

TE MANIA EMPEROR E343 pv

ASCOT HALLMARK H147 pv

MILLAH MURRAH BRENDA F123 pv

Sire DALHWINNIE M70sv

HINGAIA 469#

MILLAH MURRAH BRENDA F6 pv

MILLAH MURRAH BRENDA Y33#

Dam

TC ABERDEEN 759sv

KANSAS ABERDEEN F84sv

KANSAS ANNIE D62#

BARANA JEDDA N6#

WK REPLAY#

KANSAS JEDDA F195#

KANSAS JEDDA U50sv



DOB 7/09/2019

Tattoo JXEQ9 Q009

Grade Pure

Colour Black

Scrotal 38

Eye Pigment

Age 22

Excellent length & depth. Smooth muscle development. Good carcase characteristics. Would suit heifers.

TACE TransTasman Angus Cattle Evaluation	June 2021 TransTasman Angus Cattle Evaluation								
	CEDir	CEDtrs	GL	BW	200	400	600	MCW	Milk
EBVs	+3.1	+4.4	-4.0	+4.3	+40	+78	+108	+88	+19
Acc	41%	36%	54%	60%	58%	58%	59%	57%	53%
Perc	45	35	59	52	88	81	65	69	33
SS	DC	CWT	EMA	Rib	Rump	RBY	IMF	NFI-F	Doc
+2.6	-5.7	+57	+4.6	+0.6	+0.7	+0.1	+1.6	+0.16	-
52%	36%	54%	52%	57%	54%	55%	53%	45%	-
21	31	80	71	27	21	68	63	49	-

	TE MANIA EMPEROR E343 pv	HYLINE RIGHT TIME 338#
	ASCOT HALLMARK H147 pv	THE GRACE WHEEL WRIGHT D6PV
	MILLAH MURRAH BRENDA F123 pv	IMRAN MISS VEGAS U20#
Sire	DALHWINNIE M70sv	Dam KANSAS JEDDA F191#
	HINGAIA 469#	YTHANBRAE THE DON W57#
	MILLAH MURRAH BRENDA F6 pv	KANSAS JEDDA Y108#
	MILLAH MURRAH BRENDA Y33#	KANSAS JEDDA U50sv



DOB 4/11/2019

Tattoo JXE Q012

Grade Pure

Colour Black

Scrotal 39

Eye Pigment

Age 20

Fine hair type. Soft smooth and well muscled. Would suit heifers.

TACE TransTasman Angus Cattle Evaluation	June 2021 TransTasman Angus Cattle Evaluation								
	CEDir	CEDtrs	GL	BW	200	400	600	MCW	Milk
EBVs	+3.8	+4.0	-3.9	+5.0	+45	+87	+118	+97	+19
Acc	37%	32%	53%	56%	55%	55%	56%	54%	49%
Perc	40	39	60	69	70	52	40	52	32
SS	DC	CWT	EMA	Rib	Rump	RBV	IMF	NFI-F	Doc
+2.9	-5.4	+6.4	+4.8	-0.1	+0.5	+0.5	+2.0	+0.08	-
50%	34%	54%	52%	56%	53%	55%	52%	46%	-
13	37	55	67	48	25	50	46	38	-

	TE MANIA EMPEROR E343 pv	KANSAS JUDD J82SV
	ASCOT HALLMARK H147 pv	KANSAS JUDD L76#
	MILLAH MURRAH BRENDA F123 pv	KANSAS RITA G225#
Sire	DALHWINNIE M70sv	Dam KANSAS JEDDA N5#
	HINGAIA 469#	THE GRACE WHEEL WRIGHT D6PV
	MILLAH MURRAH BRENDA F6 pv	KANSAS JEDDA F191 #
	MILLAH MURRAH BRENDA Y33#	KANSAS JEDDA Y108#



DOB 5/09/2019
Tattoo PDC Q016
Grade Pure
Colour Red
Scrotal 41.5
Eye Pigment
Age 22

A bull that displays excellent breed characteristics. Strong topline. Square hindquarter. Smooth muscle pattern, smaller head. Should be an easy calver.

May 2021 Shorthorn Breedplan

	CE	BW	WW	YW	Milk	MCE	MWWT	STAY	CW	REA	FAT	MARB	YG
EPD	8.4	3.8	53.8	81.5	81.5	6.0	54.2	12.0	8.0	0.38	-0.086	0.02	-0.34
Acc	10%	12%	11%	11%	11%	6%	7%	7%	14%	14%	11%	12%	11%
%RK	40	65	45	50	45	45	40	60	30	55	50	40	70

JOBWE18 MARELLAN EMERALD
 GLSF19 SPRYS SUPER STAR F19
 M9XZ57 NEEARRA JUDITH 104
 Sire DCMK13 TARRAGANDA SS KIDSON K13
 SC Y157 SOUTHCOTE YALE Y157
 DCME4 TARRAGANDA SYLVIA 8TH E4
 DCMZ11 TARRAGANDA NL SYLVIAS CHOISE 3

JJJF118 FUTURITY F118
 JJJH108 FUTURITY HOT ROD
 JJJE16 FUTURITY LEGENDS RUBY E16
 Dam PDCL015 BARANA GOONDAH KIM 15TH
 JJJE16 FUTURITY LEGENDS RUBY E16
 PDCE005 BARANA GOONDAY HIM 4TH E005
 PDEA004 BARANA GOONDAH KIM



DOB 30/08/2019

Tattoo PTCP Q029

Grade Pure

Colour Red

Scrotal 40.5

Eye Pigment 100/100

Age 22

Medium framed. Sound structure. Soft, heavy muscled bull.

	CHAMPS ROMANO	
	CHAMPS ROMANO	
	VIRGINIA POLL BARBI SUE	
Sire	WOONALLEE JUMBO	Dam
	WOONALLEE BHR TORNADO	PUREBRED UNREGISTERED SIMMENTAL
	WOONALLEE KATHIE G73	COW PTCPL099
	WOONALLEE KATHIE B111	

Purchaser \$



DOB 28/12/2019

Tattoo PTCP Q055

Grade Pure

Colour Tan


Scrotal 37

Eye Pigment 100/100

Age 18

Smooth, well-muscled bull with depth & softness and adequate bone.

May 2021 Simmental Trans Tasman Group Breedplan

	Calving Ease DIR [%]	Calving Ease DTRS [%]	Birth Wt. [kg]	200 Day Wt [kg]	400 Day Wt [kg]	600 Day Wt [kg]	Milk [kg]	Scrotal Size [cm]	Carcase Wt [kg]	Eye Muscle Area [sg cm]	Rib Fat [mm]	Rump Fat [mm]	Retail Beef Yield [%]	IMF [%]
EBV	-1.9	-2.7	1.5	15	23	28	13	-0.1	12	1.5	-0.5	-0.3	1.2	-0.1
Acc	31%	32%	49%	48%	53%	58%	34%	58%	45%	38%	38%	37%	38%	31%

Sire TOPWEIGHT DIRECTOR
WILLANDRA GOMEZ (P)
WILLANDRA DIANA Z26
WOONALLEE LOOKING GLASS
WOONALLEE BHR TORNADO
WOONALLEE VASTI G52
WOONALLEE VASTI C87

Dam CHAMPS BRAVO
WOONALLEE JUMBO
WOONALLEE KATHIE G73
BARANA NIGELLA
GOWRIE YANKEE
BARANA BRONTE
BENARBA X01



DOB 29/03/2020

Tattoo PTCP R017

Grade Pure


Colour Tan

Scrotal 38

Eye Pigment 100/100

Age 15

A promising young bull out of one of our best breeding cow families. Soft, fine-skinned & showing early muscle development. Would have kept as a sire if he was clean polled.

May 2021 Simmental Trans Tasman Group Breedplan														
	Calving Ease DIR [%]	Calving Ease DTRS [%]	Birth Wt. [kg]	200 Day Wt [kg]	400 Day Wt [kg]	600 Day Wt [kg]	Milk [kg]	Scrotal Size [cm]	Carcase Wt [kg]	Eye Muscle Area [sg cm]	Rib Fat [mm]	Rump Fat [mm]	Retail Beef Yield [%]	IMF [%]
EBV	-3.5	-1.1	2.9	22	36	57	14	0.9	24	1.1	0.4	0.9	0.3	0.2
Acc	36%	36%	52%	48%	48%	50%	41%	41%	41%	32%	34%	34%	33%	29%

Sire TOPWEIGHT DIRECTOR
WILLANDRA GOMEZ (P)
WILLANDRA DIANA Z26
WOONALLEE LOOKING GLASS
WOONALLEE BHR TORNADO
WOONALLEE VASTI G52
WOONALLEE VASTI C87

Dam SHAWACRES NACOBI
BULLOCKHILLS BUSTER
BULLOCKHILLS ERP P U4
BARANA ELLISON
SANDERAE SUELERMAN
BARANA WINDFLOWER
BARANA LOWANNA

Purchaser \$



DOB 17/03/2020

Tattoo MKHP R001

Grade Pure

Colour Red

Scrotal 39

Eye Pigment 100/100

Age 11

Soft, early maturing type. Good carcase characteristics. Fine skin.

Sire

CHAMPS ROMANO
CHAMPS ROMANO
VIRGINIA POLL BARBI SUE
WOONALLEE JUMBO
WOONALLEE BHR TORNADO
WOONALLEE KATHIE G73
WOONALLEE KATHIE B111

Dam

CHAMPS BRAVO
WOONALLEE JUMBO
WOONALLEE KATHIE G73
MORNING POLLYANNA
BULLOCKHILLS BUSTER
MORNING GAIL
MORNING ALEX

Purchaser

\$

36

LOT 28

BARANA UNREGISTERED [H]

A/c: Barana Pastoral



DOB 10/03/2020

Tattoo PTCP R101

Grade Pure

Colour Tan

Scrotal 37

Eye Pigment 100/100

Age 15

Early maturing muscle development. Would produce progeny that are quick finishing.

Sire PUREBRED SIMMENTAL BULL

Dam PUREBRED SIMMENTAL COW

Purchaser

\$

LOT 29

BARANA UNREGISTERED [Sc]

A/c: Barana Pastoral



DOB 16/01/2020

Tattoo PTCP R100

Grade Pure

Colour Light Red

Scrotal 37

Eye Pigment 100/100

Age 17

Excellent length & muscle. A bull with a bit more frame.

Sire EANDO EZRA [P] BXDPJ009

Dam EANDO TASMIN [P] BXDPK001

Purchaser

\$

DOB 29/08/2019

Tattoo ZWCP Q005

Grade Pure

Colour Tan

Scrotal 37

Eye Pigment 100/100

Age 22

Please follow our social media
for uploaded photo.

A mainly grass fed bull. Excellent length of body. Very sound structure. Well presented in strong working condition.

Sire

TOPWEIGHT DIRECTOR
WILLANDRA GOMEZ (P)
WILLANDRA DIANA Z26
WOONALLEE LOOKING GLASS
WOONALLEE BHR TORNADO
WOONALLEE VASTI G52
WOONALLEE VASTI C87

Dam

BARANA JACINTA [P] PTCPJ015

Purchaser

\$

Age 21

The pick bull of the Palmer draft. Soft easy doing bull with fine skin. Mainly grass fed.

40

DOB 01/08/2019

Tattoo PPAP Q001

Grade

Colour Pure Tan

Scrotal 38

Eye Pigment 100/100

Age 21

Please follow our social media
for uploaded photo.

Mid to late maturity pattern. Mainly grass fed.

Sire

TOPWEIGHT DIRECTOR
WILLANDRA GOMEZ (P)
WILLANDRA DIANA Z26
WOONALLEE LOOKING GLASS
WOONALLEE BHR TORNADO
WOONALLEE VASTI G52
WOONALLEE VASTI C87

Dam

BARANA HOPE [P] PTCPH002

Purchaser

\$

Please follow our social media
for uploaded photo.

DOB 06/11/2019

Tattoo PPAP Q002

Grade Pure

Colour Pure Tan

Scrotal 38.5

Eye Pigment 100/100

Age 20

Deep, thickset, soft bull showing good promise. Well presented in strong working condition.
Mainly grass fed.

	TOPWEIGHT DIRECTOR	
	WILLANDRA GOMEZ (P)	
	WILLANDRA DIANA Z26	
Sire	WOONALLEE LOOKING GLASS	Dam
	WOONALLEE BHR TORNADO	BARANA MEGAN [P] PTCPM022
	WOONALLEE VASTI G52	
	WOONALLEE VASTI C87	

Purchaser \$

DOB 1/08/2019

Tattoo ZWCP Q006

Grade Pure

Colour Tan

Scrotal 37

Eye Pigment 100/100

Age 23

Please follow our social media
for uploaded photo.

Middle of the road bull. Sound structure. Stands on good bone. Mainly grass fed.

Sire

TOPWEIGHT DIRECTOR
WILLANDRA GOMEZ (P)
WILLANDRA DIANA Z26
WOONALLEE LOOKING GLASS
WOONALLEE BHR TORNADO
WOONALLEE VASTI G52
WOONALLEE VASTI C87

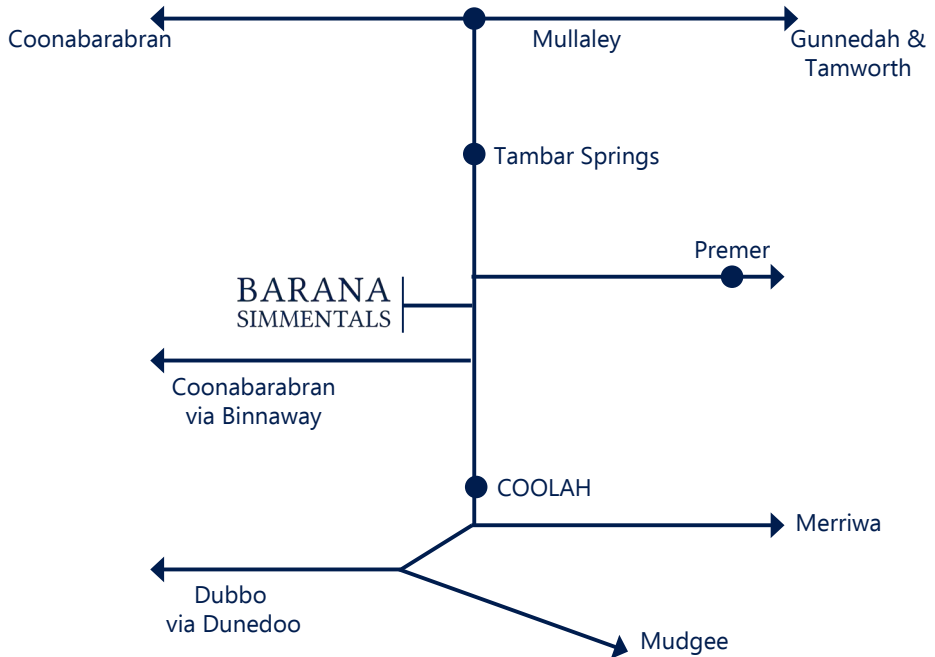
Dam

WONGALEA KIMBA [P] ZWCPK001

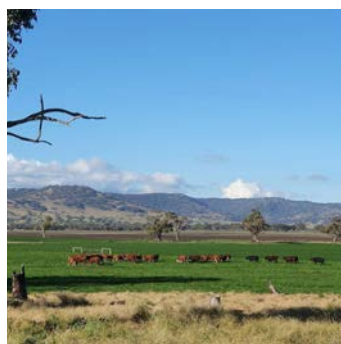
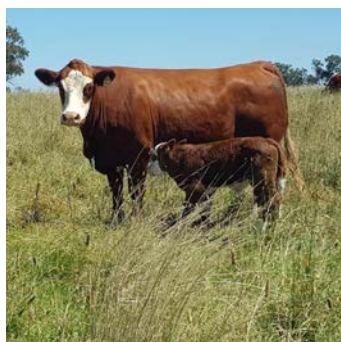
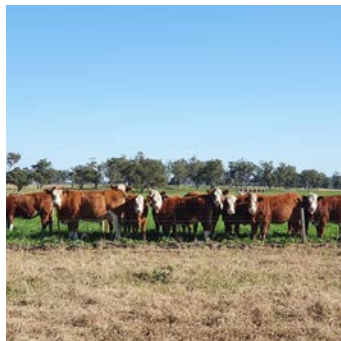
Purchaser

\$

DIRECTIONS



SEE MORE PHOTOS ON OUR FACEBOOK & INSTAGRAM



@BaranaSimmentals



LOT 1 BARANA QUATTRO PTCP Q011 [P]



LOT 4 BARANA QUEST PTCP Q018 [P]



LOT 3 BARANA UNREGISTERED [P]



LOT 5 BARANA QUANTICO PTCP Q007 [P]



LOT 20 BARANA QUANTUM JXE Q010 [P]



LOT 19 BARANA QUARRY JXE Q011 [P]

BARANA SIMMENTALS

0427 775 233

baranasimmentals.com

barana@bigpond.com



Gunnedah | Nik Hannaford 0417 201 460
 Tamworth | Brian Kennedy 0427 844 047
 Dubbo | Paul Jameson 0428 667 998
 Inverell | Lincoln McKinlay 0419 239 963



Luke Scicluna 0428 421 828
 Tom Tanner 0448 462 177
 Paul Banks 0427 922 700